



spadework

sowing the seeds of opportunity

November Horticultural Newsletter



Bonfire Night and Garden Wildlife

We all know how important wildlife is to our countryside, so this month we are concentrating on how to care for visitors in our garden. November is the month for bonfires and fireworks, but this can be disruptive to wildlife so we have devised some top tips for enjoying the season whilst protecting garden creatures.

1. Hedgehogs take shelter in woodpiles and compost heaps. Sometimes they make their home in the bottom of a bonfire pile. Before lighting any bonfires please check for holes or hibernating creatures. Moving the pile to another location would be ideal.
2. Setting up a mesh fence around the proposed bonfire will help to prevent creatures sheltering inside.
3. Only light the bonfire on 1 side as opposed to in the middle or all the way round to allow any creatures to escape.



Picture courtesy of RSPB.org

4. Set up a wildlife habitat in your garden to allow alternative shelter for animals away from your bonfire site.
5. If you are planning to use fireworks make sure you let them off away from trees and woodland areas so as not to scare birds and other wildlife.
6. Always have a bucket of water close by when lighting bonfires or using fireworks.

What's Looking Good This Month



Photinia "Magical Volcano"



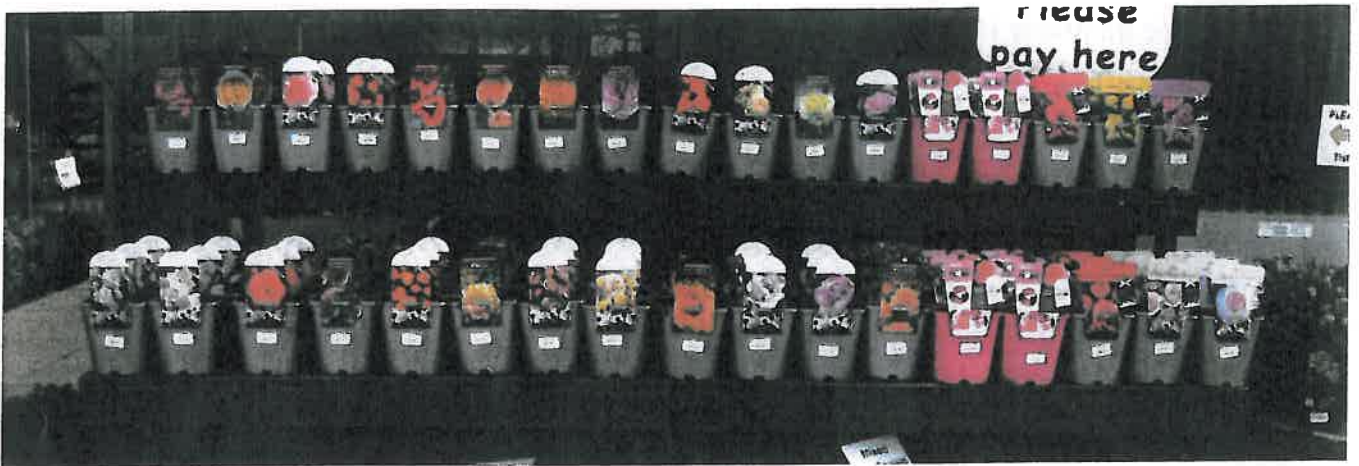
Malus "Golden Hornet"



Viola "Mixed"

Planting

Now is the ideal time to be planting Roses and we have some wonderful varieties in stock. We have gift roses, Climbers and Ramblers, Hybrid Tea and Floribunda varieties in a wide spectrum of colours!



Pruning

Now is a good time to prune many deciduous trees and shrubs. When pruning remember you are removing the 3 D's.

- Dead – Cut out and dead branches as these can allow disease to enter the plant.
 - Diseased – Any branches that show signs of disease should be removed immediately to prevent it spreading further.
- Damaged – Much like dead branches, these should be removed as they can allow disease to enter the plant.

Another way to help prevent the spread of disease is to regularly collect any fallen leaves as these can harbour pests and disease, especially around plants such as roses that are effected by fungal spores.

Wildlife Special

Here at Spadework we are dedicated to looking after our wildlife.

We have our own Wildlife area and many bird feeders dotted around site.

We believe it is important for all gardens (big and small) to do their bit in looking after our British Wildlife. Because of this we have extended our range of feeders, shelters and food to help our customers make their gardens into Wildlife havens.

Black Steel Range

These have the Gardman trademark **Feedsafe** coating to help inhibit the growth of bacteria.



Shelter

There are many ways to help the animal visitors to your garden, one of the most important things you can do is offer them some form of shelter.



Decorative Features



Food



What to Feed our favourite Garden Birds

Type of Food	Bird Species
Mealworms	House Sparrow, Robin, Wren
Peanuts	Greater Spotted Woodpecker, Dunnock
Sunflower Hearts	Bullfinch, Blackbird, Long Tailed Tit
Fat Balls	Blue and Great Tit
Nyger Seed	Siskin, Goldfinch

What's happening elsewhere at Spadework...

- The Garden Centre have a large range of Autumn bedding and hanging baskets. Many of the violas we have for sale were grown here at Spadework by our team in the Glasshouse.
- Woodwork and Craft are busy making many signs, ornaments and gifts ready to be sold at the Christmas Fair.
- Our Gardening team have been delivering logs, kindling and coal to many of our customers. If you would like to order any fuel for Winter, please ask one of our members of staff.



Coming Up in Next Month's Newsletter...

- A special feature on Christmas Gifts made here at Spadework.
- We pick the best Christmas Plants for your garden and your home.
- Christmas Tree feature

DON'T FORGET... CHRISTMAS FAIR IS HELD HERE ON SATURDAY 10TH DECEMBER.